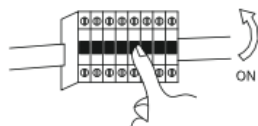
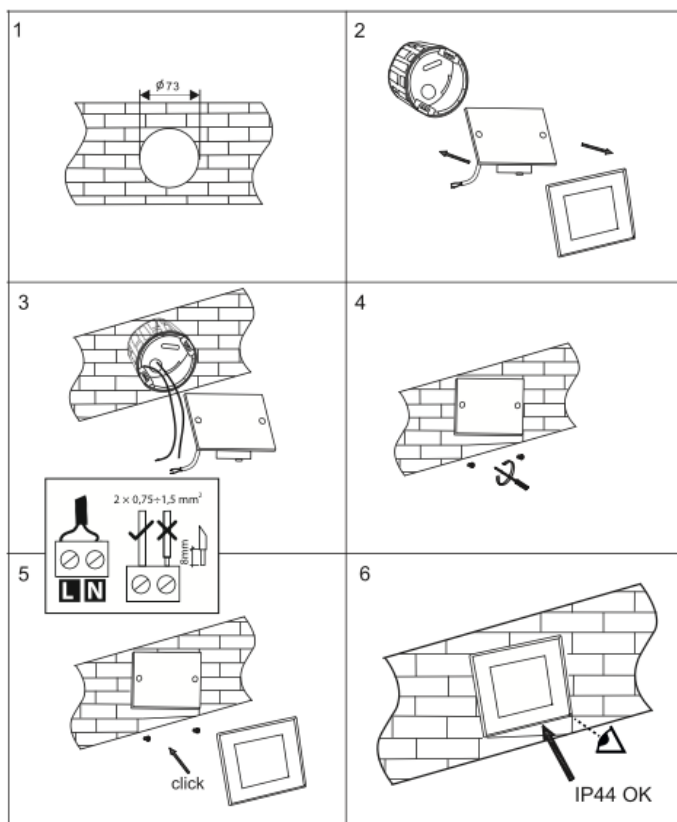
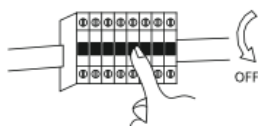




EN CZ SK HU DE PL

DECENTLY IP44



S1 220-240- 50/60Hz	S2 W	S3 □	S4 IP 44	S5 lm	S6 Ra CRI	S7 Tc CCT
S8 V h	S9 △	S10 ⊕	S11 ↔	S12 ⌚	S13 xxxmA 230V/50Hz	S14 ⊗
S15 Pf (λ)	S16 CE	S17 RoHS	01 PAP	01 ♻️	01 ♻️	02 WEEE

LED lamp

CLASSIFICATION AND ASSIGNMENT

Luminaire designed for installation in a mounting box. Wall luminaire with built-in, user-unalterable LED module with integrated power supply. The product is intended for professional/investment use in areas of industrial, warehouse, retail, and so on.

EXPLANATION OF USED SIGNS AND SYMBOLS

S1 Nominal voltage, frequency

S2 Nominal power output

S3 Tier two electric shock protection

S4 (IP44) Protection against solid foreign objects bigger than 1,0mm is provided. Protection against splashing water is provided.

S5 Amount of light put out by the lamp (initial value)

S6 Color rendering index

S7 Color temperature range

S8 Average lifetime

S9 Illumination angle

S10 Environment of the operating temperature range

S11 Wall mounting in the KP wiring box

S12 Intended for indoor and outdoor use

S13 Rated current

S14 Unsuitable for use with a dimmer

S15 Power factor

S16 Complies with the requirements of the CE conformity assessment for safe application within the European Union.

S17 Complies with the requirements of the RoHS (Restriction of Hazardous Substances) directive according to EU regulations.

01-02 Any usage of the product in unsuitable conditions must be thoroughly assessed by the installer so that the corresponding terms of use are satisfied.

ASSEMBLY/INSTALLATION

1. Before the installation, familiarize yourself with the manual.
2. Installation and applicability assessment for the specific conditions need to be carried out by appropriately qualified personnel.
3. The product is suitable for installation/mounting onto non-flammable surfaces (that do not support burning, such as concrete, cast, or metal) or normally flammable surfaces (with a point of combustion lower than 200°C, such as wood and wooden materials more than 2 mm thick).
4. The product may not be installed on the surface or near flammable materials or objects, combustibles, etc. It is necessary to adhere to free protection measures.
5. Any activity during the installation, operation, adjustment, or maintenance of the lamp must be performed after disconnecting the power supply. It is necessary to prevent the potential accidental connection of the power supply by another person.
6. During the assembly and installation, it is necessary to adhere to the procedures in the drawings.
7. Before first use, it is necessary to make sure that the mechanical attachment, electrical connection, and conditions of use are in order.
8. It does not contain a terminal block. Connection may require advice/instructions from a skilled person.
9. The product comes with flexible, inseparable electrical connections led out of the light. In the event of damage to the supply, its insulation or other parts of the light product must not be used. Must be permanently disconnected from the power supply. Repair or replacement can be performed by a qualified service technician or with equivalent qualifications.
10. To ensure IP44 protection in the mounting box area, a seal must be used between the light and the mounting box (the seal is not included).

INSTRUCTIONS FOR OPERATION / MAINTENANCE

1. The product may not be heated above operating temperature by the influence of another heat source.
2. In case of excessive frequent switching, e.g., via motion sensors, the lamp's lifespan can be reduced.
3. Do not use chemical agents to clean the lamp. If possible, clean using a dry or damp soft cloth.
4. The light source of this light is non-replaceable. After the end of the lifetime of the light, it is necessary to replace the whole light.

ENVIRONMENTAL PROTECTION / INSTRUCTIONS FOR PRODUCT USAGE

- 01- Pay attention to cleanliness, environmental protection, and waste management. The product's designation is to be presented for managed disposal-collection of electrical and electronic equipment. These products are not to be disposed of along with common or other waste, under penalty of a fine. These products may be harmful to the environment and human health and require further forms of processing, especially via recycling or disposal.
- 02- Products with this marking must be delivered to a collection point for electrical and electronic equipment. Information regarding collection points for these products is provided by local authorities or vendors of this type of goods. When its lifetime is over, the equipment can also be turned over to the vendor when buying a new product, provided the quantity returned is not greater than the quantity purchased for the same type of equipment.

No changes or technical modifications are acceptable. Otherwise, all responsibilities are transferred to the person performing such changes. Failure to abide by this manual can cause fire, burning, electric shock, physical injuries, and other material or immaterial damage. The supplier is not responsible in any way for the consequences of failing to abide by the recommendations provided via this manual, including improper assembly or installation, operation, insufficient maintenance and supervision during usage, or other consequences – among others the place and method of usage. We recommend that you keep this manual.